

NET WT. 15 LBS. (6.81 kg)
TREATS UP TO 7,500 SQUARE FEET



Grub Control

Contains
DYLOX®
Insecticide

Grub Control



- Controls damaging insects below the soil surface.
- Provides control of Japanese beetle grubs. (see back panel for complete list of pests controlled.)
- Contains **DYLOX®** insecticide.



SPECIMEN LABEL

Contains
DYLOX®
Insecticide

Grub Control



FAST-ACTING
STORE IN A DRY PLACE

ACTIVE INGREDIENT:	
Dimethyl (2,2,2-trichloro-1-hydroxy-ethyl)phosphonate	6.2%
INERT INGREDIENTS:	93.8%
	100.0%

EPA Reg. No. 492-1308-961
DYLOX® is a Reg. TM of Bayer AG.

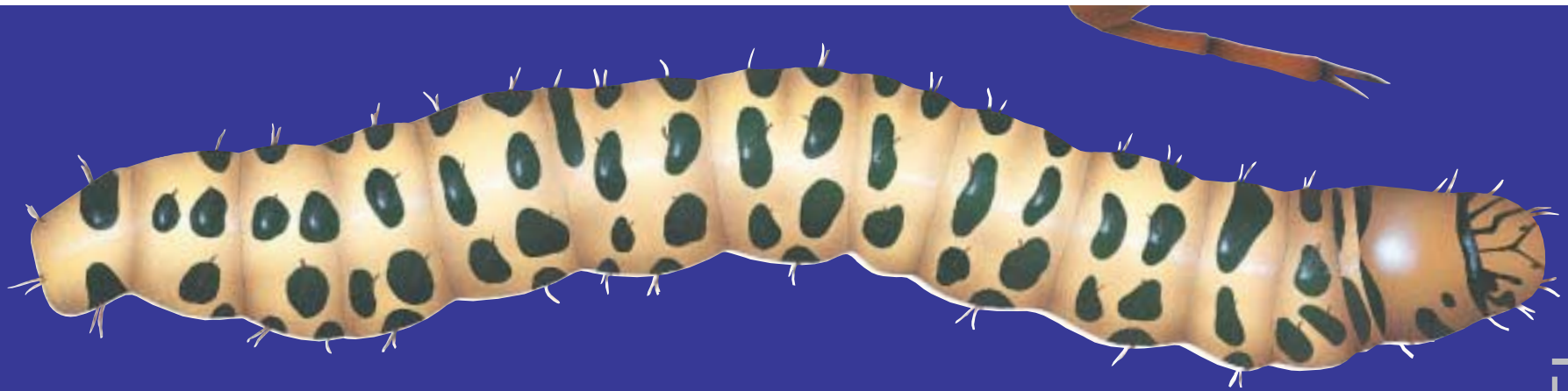
EPA Est. No. indicated by 2nd and 3rd digit of
batch number applied on this package.
(52) = 44215-KS-1 (77) = 070989-MO-001

STOP - READ THE LABEL BEFORE USE
KEEP OUT OF REACH OF CHILDREN
CAUTION AVISO

See back panel for additional Precautionary Statements.

PRECAUCION AL USUARIO: Si usted no puede leer o entender inglés, no use este producto hasta que le etiqueta le haya sido explicada ampliamente.

(TO THE USER: If you cannot read or understand English, do not use this product until the label has been explained to you.)



FAST-ACTING
STORE IN A DRY PLACE

ACTIVE INGREDIENT:		
Dimethyl (2,2,2-trichloro-1-hydroxy-ethyl)phosphonate	6.2%	
INERT INGREDIENTS:	93.8%	
	100.0%	

EPA Reg. No. 432-1308-961
DYLOX® is a Reg. TM of Bayer AG.

EPA Est. No. indicated by 2nd and 3rd digit of
batch number applied on this package.
(52) = 44215-KS-1 (77) = 070989-MO-001

STOP - READ THE LABEL BEFORE USE

KEEP OUT OF REACH OF CHILDREN
CAUTION AVISO

See back panel for additional Precautionary Statements.

PRECAUCION AL USUARIO: Si usted no puede leer o entender inglés, no use este producto hasta que la etiqueta le haya sido explicada ampliamente.

(TO THE USER: If you cannot read or understand English, do not use this product until the label has been explained to you.)

SPECIMEN LABEL

Grub Control

Contains
DYLOX®
Insecticide

NET WT. 15 LBS. (6.81 kg)
TREATS UP TO 7,500 SQUARE FEET

Grub Control

Contains
DYLOX[®]
Insecticide



PRECAUTIONARY STATEMENTS HAZARDS TO HUMANS AND DOMESTIC ANIMALS

CAUTION

May be harmful if swallowed. Do not take internally. Do not breathe dust. Avoid contact with eyes, skin or clothing. Wash contaminated clothing before re-use. Wash thoroughly after handling and before eating or smoking. Keep children and pets off treated areas until this material is washed into the soil and the grass is dry. Do not contaminate feed or foodstuffs. Do not use treated areas or clippings from treated areas for feed or forage.

STATEMENTS OF PRACTICAL TREATMENT

IF SWALLOWED: Call a physician or Poison Control Center immediately. Induce vomiting by giving victim 1 or 2 glasses of water and touching back of throat with finger. Do not induce vomiting or give anything by mouth to an unconscious or convulsing person.

IF IN EYES: Flush eyes with plenty of water. Get medical attention.

IF ON SKIN: Remove contaminated clothing and wash affected area with soap and warm water. Wash clothing before re-use.

IF INHALED: Remove victim to fresh air. Apply artificial respiration if indicated. Get medical attention immediately.

TO PHYSICIAN: Prolonged exposure will cause cholinesterase depression. Atropine Sulfate is antidotal. 2-PAM is also antidotal and may be administered in conjunction with atropine. For Emergency Medical Information call (888) 208-1368.

ENVIRONMENTAL HAZARDS

Do not contaminate water by cleaning of equipment or disposal of wastes. This product is toxic to fish, birds, and wildlife. Do not apply directly to water, or to areas where surface water is present or to intertidal areas below the mean high water mark. Do not apply where runoff is likely to occur. Use only as directed on this label. Do not use on crops used for food or forage.

DIRECTIONS FOR USE

It is a violation of Federal law to use this product in a manner inconsistent with its labeling.

NOTE: Not for use on turf being grown for sale or other commercial use as sod, or for commercial seed production, or for research purposes.

SURFACE FEEDING INSECTS

Sod Webworms are capable of destroying large areas of turf. They live through the winter as a worm and change to a moth in May. Eggs are deposited very soon throughout the lawn and new worms hatch in May. By killing this first "brood" it is possible to reduce the worm population of later broods and therefore reduce turf damage.

HOW TO APPLY

Turf should be free of troublesome thatch which encourages insects. Rake or de-thatch the area and remove the debris to expose insect hiding places. Water the lawn and cut to proper height. Apply granules as recommended and sprinkle the area to move the insecticide down to the soil surface where insects feed.

HOW MUCH TO APPLY

For control of Sod Webworms (Lawn Moth Larvae), and Cutworms apply at the rate of 2 pounds per 1,000 sq. ft. of turf. (15 lb. bag treats 7,500 sq. ft.). Refer to chart for respective spreader settings. Make sure your spreader is calibrated for this product before application.

WHEN TO APPLY

Treat in the spring (mid-May to June) or when your "Lawn Program" calls for a surface insect control application. Repeat as the program indicates or as needed for control. Sod Webworm may have 4 generations of larvae which will require additional treatments at 30 to 40 day intervals during the summer months. Therefore, repeat as needed for continued protection of lawn. Lightly sprinkle the area after treatment as soon as possible to move the insecticide into the zone of insect infestation. Do not allow children or pets on treated areas until material has been sprinkled in and the grass is dry.

SPECIMEN LABEL

WHITE GRUB LARVAE AND MOLE CRICKET CONTROL IN THE TURF

For Root Feeding "White Grub" insect larvae of Japanese Beetle, European Chafer & Southern Chafer apply 3 lb. per 1,000 sq. ft. of turf. For Mole Crickets, apply 3 lb. per 1,000 sq. ft. Make sure your spreader is properly calibrated to apply this product. Irrigate the turf after treatment as soon as possible to wash the insecticide into the root zone where the insects are feeding. Apply when the White Grub Larvae are young and actively feeding near the soil surface in mid-July and early August. Consult your Agricultural Extension Service for the best time to treat for "Grubs" in your area. A second treatment at the same rate may be needed for mature large sized grubs.

HOW TO APPLY: IMPORTANT...

Do not attempt to control White Grubs or Mole Crickets in turf that has over 1/2 to 3/4 inch thatch build up since heavy thatch will prevent the insecticide from penetrating down to the area where the insects are feeding. Therefore, troublesome thatch must be removed before treating for White Grubs or Mole Crickets. If thatch is not removed before treatment, poor "Grub" and Mole Cricket control will result.

SPREADER SETTINGS

	Surface Feeding Insects		Root Feeding Insects			Surface Feeding Insects		Root Feeding Insects	
	2 Lbs./ 1,000 Sq. Ft.	3 Lbs./ 1,000 Sq. Ft.	2 Lbs./ 1,000 Sq. Ft.	3 Lbs./ 1,000 Sq. Ft.		2 Lbs./ 1,000 Sq. Ft.	3 Lbs./ 1,000 Sq. Ft.		
Drop Spreader					Broadcast Spreader				
Greenview® Drop-Spred® XP1	29	29			Greenview® Jet-Spred® SS1	16	17		
Greenview® Drop-Spred® II	5 1/2	6			Greenview® Jet-Spred® II	4	4		
Greenview® Drop-Spred® III	5 1/2	6			Greenview® Jet-Spred® III	4 1/2	4 1/2		
Earthway	29	29			Cyclone	4	4		
Red Devil/Spred Devil (1-5)	4	4 1/2			Earthway	16	17		
Republic Drop	5 1/2	7 1/2			Red Devil/Spred Devil (1-10)	3	3 1/2		
Sears Lawn Crafter	4	4 1/2			Republic	2	4		
Scotts AccuGreen®	5 1/2	6			Sears Craftsman Rotary	5	5 1/2		
Scotts Drop	7 1/2	8			Scotts EasyGreen®	26	28		
					Scotts SpeedyGreen®	4 1/2	6 1/2		



NOTE: If your spreader model does not appear above, please call toll free 800-233-1067, 8 A.M. - 5 P.M. EDT, Monday - Friday for additional model settings. The above spreader settings are approximate. Rate of walk, moisture and spreader condition can vary the spreader setting necessary to apply the correct amount.

STORAGE AND DISPOSAL

Do not contaminate water, food, or feed by storage or disposal.

STORAGE: Store in its original container in a cool, dry, locked place out of reach of children.

PESTICIDE DISPOSAL: Wastes resulting from the use of this product may be disposed of on site or at an approved waste disposal facility.

CONTAINER DISPOSAL: Completely empty bag into application equipment. Then dispose of empty bag in a sanitary landfill.

HOUSEHOLD: Do not re-use empty bag. Wrap and put in trash.

IMPORTANT: READ BEFORE USE

Read the entire Directions for Use, Conditions, Disclaimer of Warranties and Limitations of liability before using this product.

If terms are not acceptable, return the unopened product container at once. By using this product, user or buyer accepts the following conditions, disclaimer of warranties and limitations of liability.

CONDITIONS: The directions for use of this product are believed to be adequate and should be followed carefully. However, because of manner of use and other factors beyond the Distributor's control it is impossible for the Distributor to eliminate all risks associated with the use of this product. As a result, crop injury or ineffectiveness is always possible. All such risks shall be assumed by the user or buyer.

DISCLAIMER OF WARRANTIES: THE DISTRIBUTOR MAKES NO OTHER WARRANTIES, EXPRESS OR IMPLIED, OF MERCHANTABILITY OR OF FITNESS FOR A PARTICULAR PURPOSE OR OTHERWISE, THAT EXTEND BEYOND THE STATEMENTS MADE ON THIS LABEL. No agent of the Distributor is authorized to make any warranties beyond those contained herein or to modify the warranties contained herein. The Distributor disclaims any liability whatsoever for special, incidental or consequential damages, resulting from the use or handling of this product.

LIMITATIONS OF LIABILITY: THE EXCLUSIVE REMEDY OF THE USER OR BUYER FOR ANY AND ALL LOSSES, INJURIES OR DAMAGES RESULTING FROM THE USE OR HANDLING OF THIS PRODUCT, WHETHER IN CONTRACT, WARRANTY, TORT, NEGLIGENCE, STRICT LIABILITY OR OTHERWISE, SHALL NOT EXCEED THE PURCHASE PRICE PAID, OR AT DISTRIBUTOR'S ELECTION, THE REPLACEMENT OF PRODUCT.

Distributed by: **LEBANON SEABOARD CORPORATION**
 1600 EAST CUMBERLAND STREET
 LEBANON, PA 17042
 www.lebsea.com

SPECIMEN LABEL